

**United States Bankruptcy Court
Middle District of Alabama**

**Filing Statistics
Year Ending 2011**

Multi-Year Charts

Total Filings: 2000-2011

Quarterly Filings: 2007-2011

Filings by Division: 2007-2011

Total Ch. 7 and Ch. 13 Filings: 2007-2011

Total Ch. 11 and Ch. 12 Filings: 2007-2011

Total Adversary Filings: 2007-2011

2011 Charts

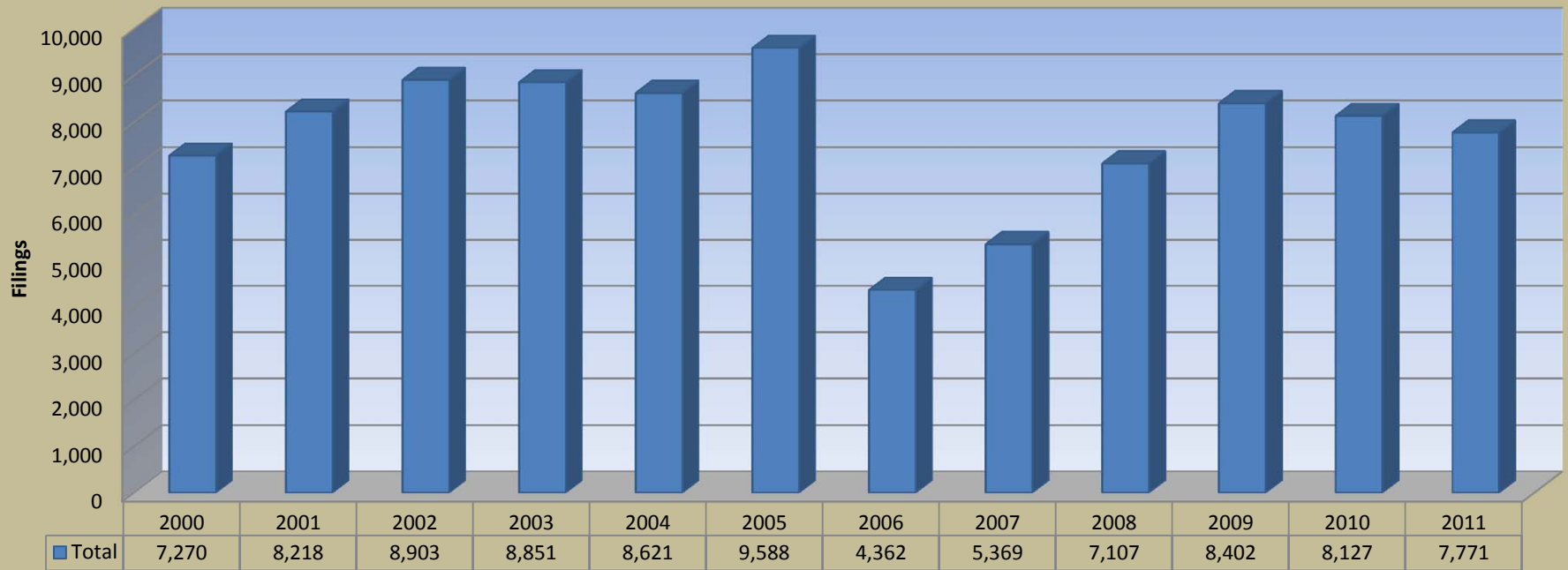
2011 Divisional Breakdown

2011 Chapter Breakdown

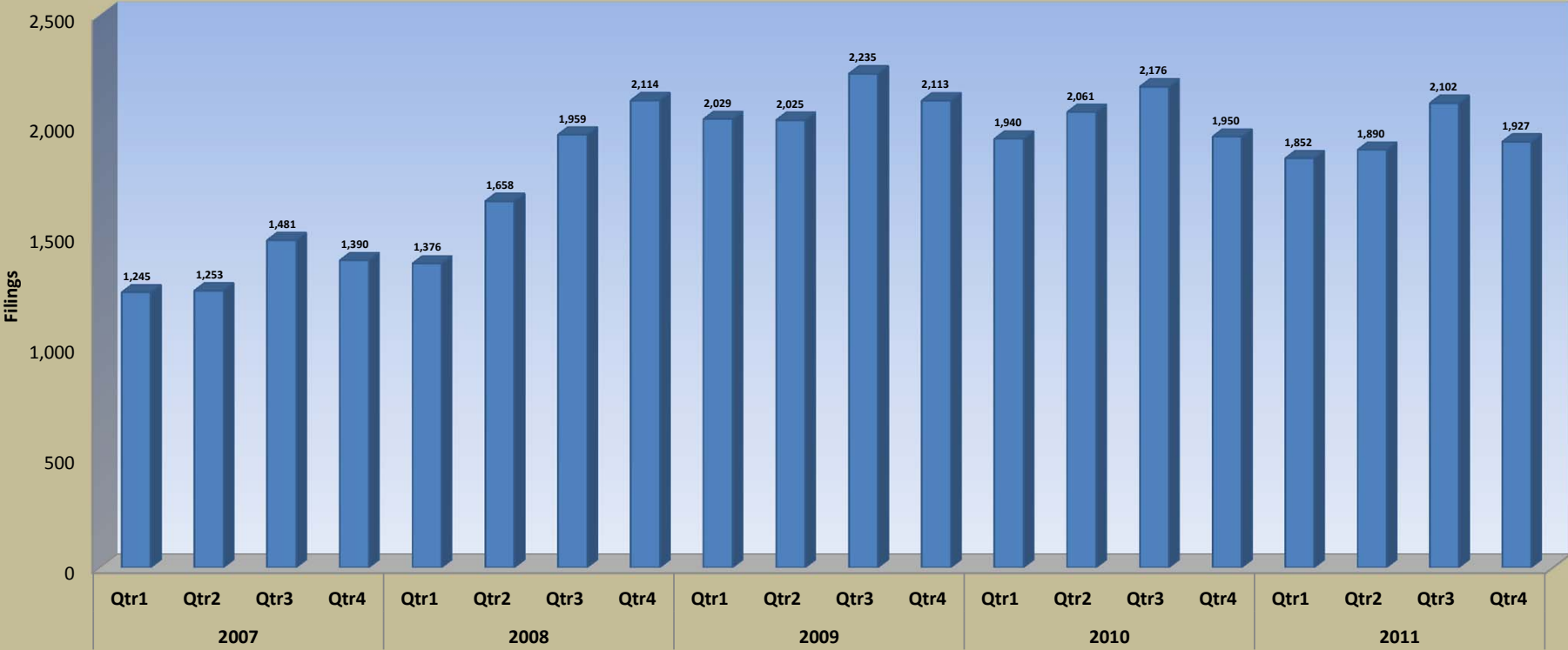
2011 Ch. 7 and Ch. 13 Filings by Division

2011 Ch. 11 and Ch. 12 Filings by Division

**U.S. Bankruptcy Court
Middle District of Alabama
Total Filings
2000 - 2011**



**U.S. Bankruptcy Court
Middle District of Alabama
Total Quarterly Filings
2007 - 2011**

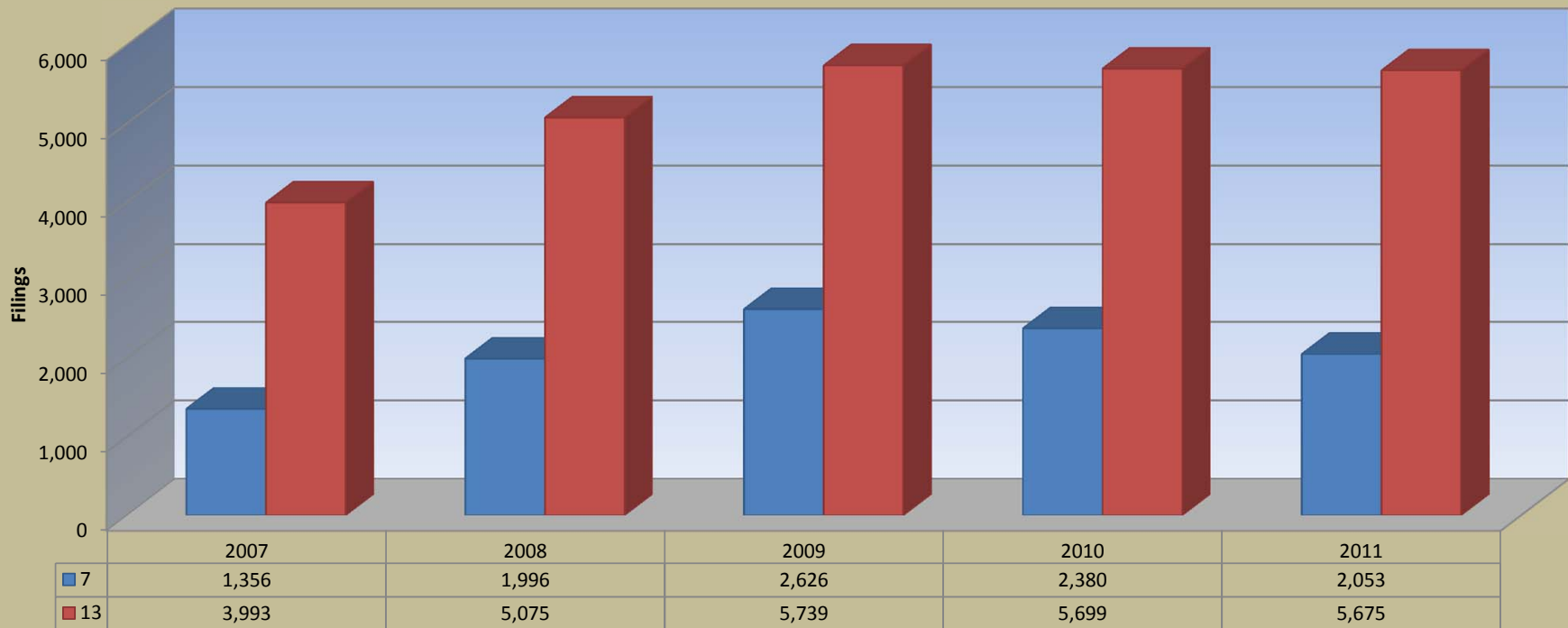


**U.S. Bankruptcy Court
Middle District of Alabama
Total Filings by Division
2007 - 2011**

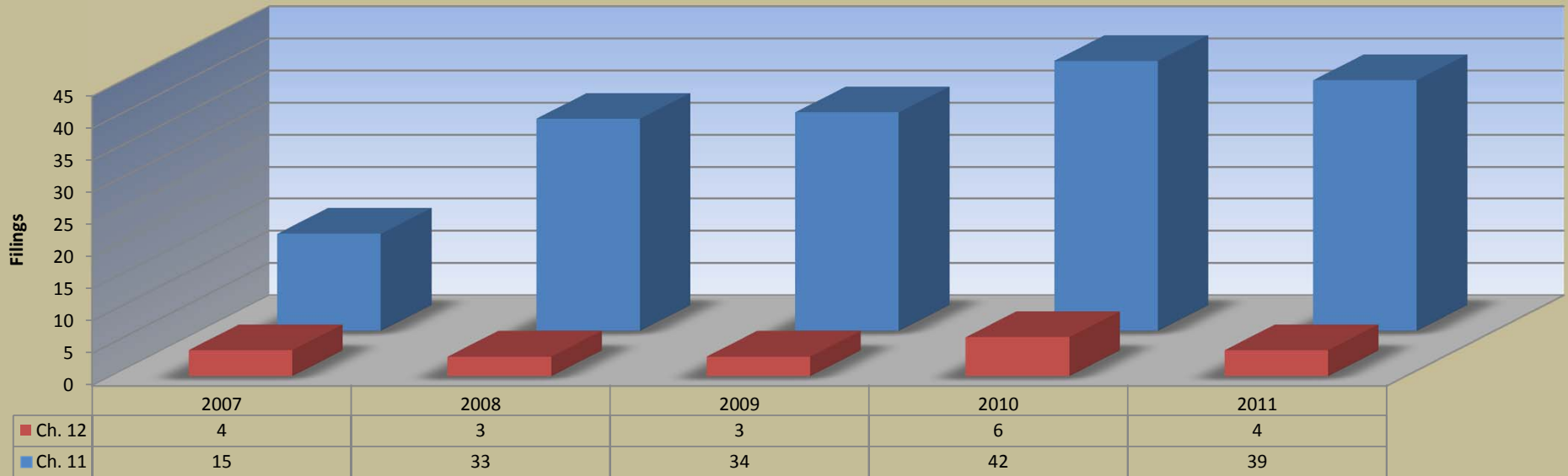


	2007	2008	2009	2010	2011
Montgomery	2,059	2,872	3,577	3,509	3,388
Dothan	1,807	2,250	2,651	2,535	2,346
Opelika	1,503	1,985	2,174	2,083	2,037
Total	5,369	7,107	8,402	8,127	7,771

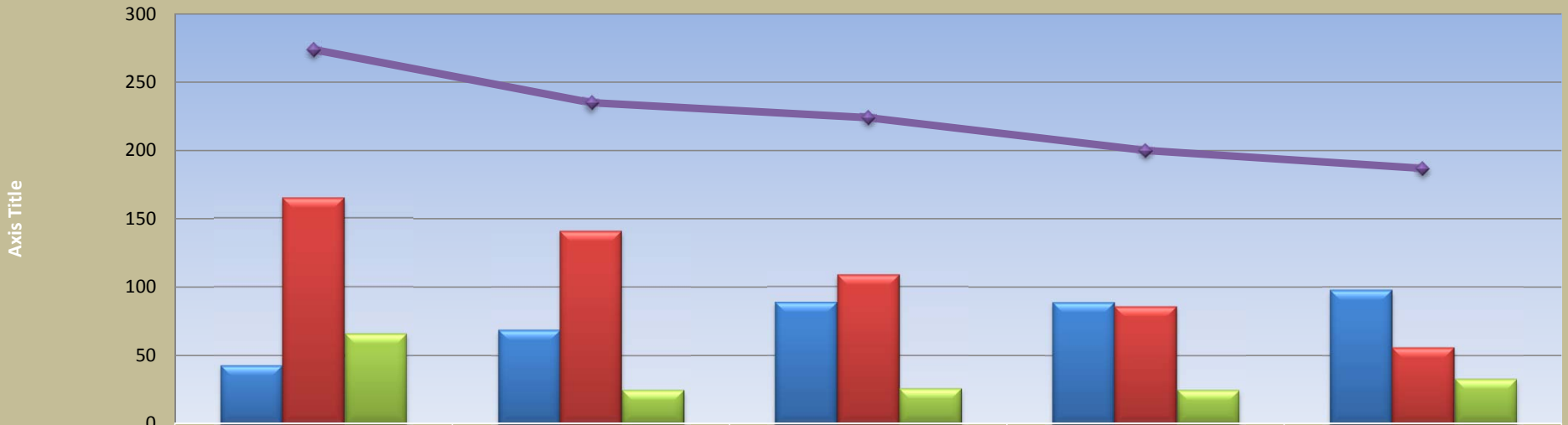
**U.S. Bankruptcy Court
Middle District of Alabama
Ch. 7 and 13 Filings
2007 - 2011**



**U.S. Bankruptcy Court
Middle District of Alabama
Ch. 11 and 12 Filings
2007 - 2011**

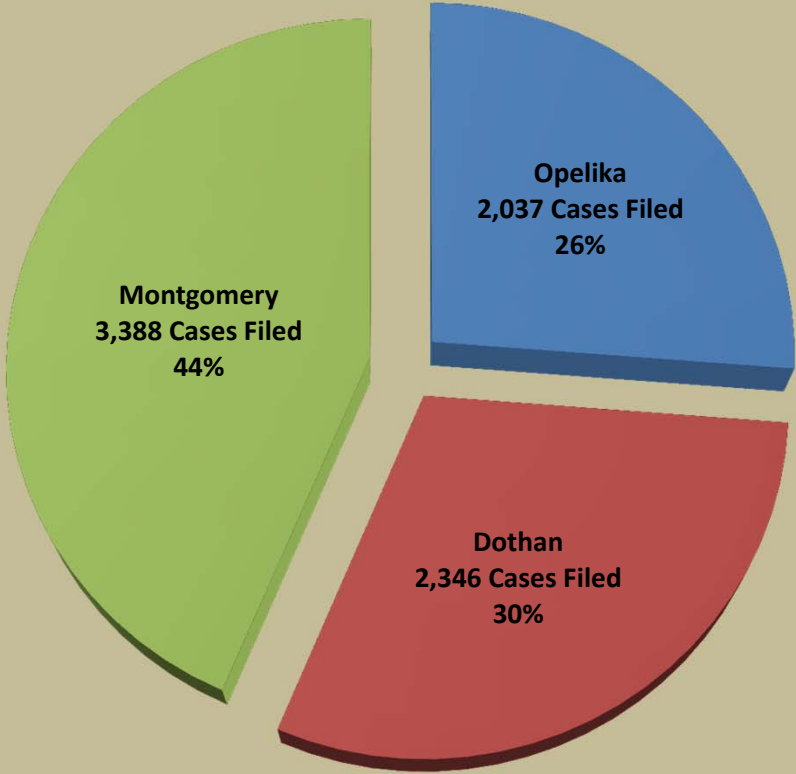


**U.S. Bankruptcy Court
Middle District of Alabama
Total Adversary Filings by Division
2007 - 2011**

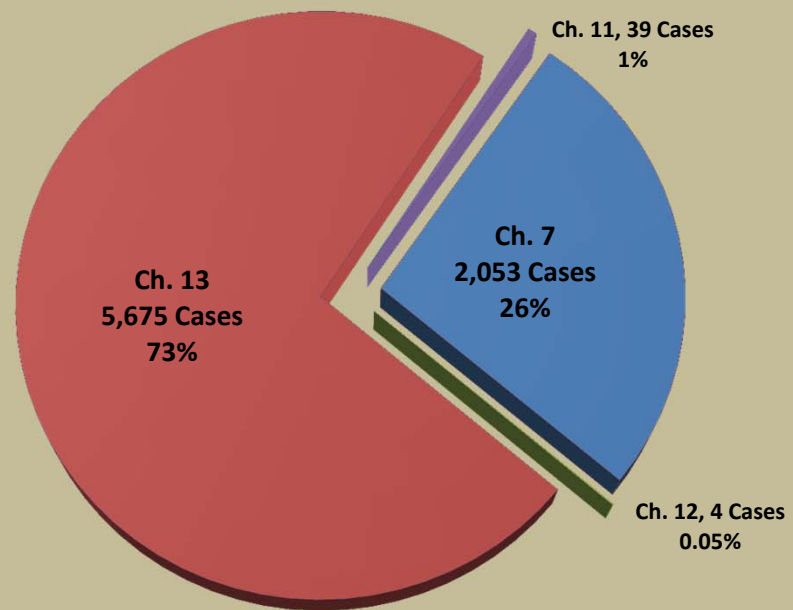


	2007	2008	2009	2010	2011
Montgomery	43	69	89	89	98
Dothan	165	141	109	86	56
Opelika	66	25	26	25	33
Total	274	235	224	200	187

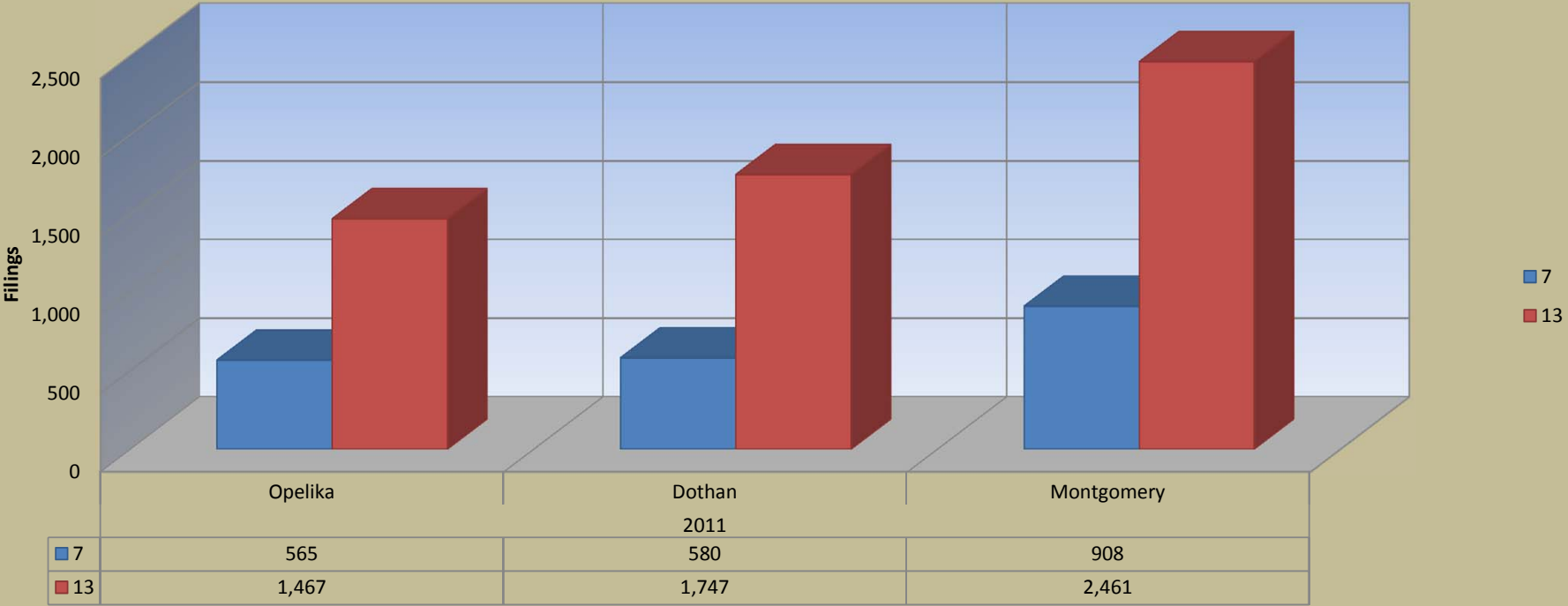
**U.S. Bankruptcy Court
Middle District of Alabama
Divisional Filings
2011**



**U.S. Bankruptcy Court
Middle District of Alabama
Filings by Chapter
2011**



**U.S. Bankruptcy Court
Middle District of Alabama
Ch. 7 and Ch. 13 Filings by Division
2011**



**U.S. Bankruptcy Court
Middle District of Alabama
Ch. 11 and Ch. 12 Filings by Division
2011**

